



*Unmatched in North America*

## *Discover Telluride this winter.*



Legendary for both scenery and terrain, Telluride has again set itself apart with the addition of Revelation Bowl. This Alps-style powder bowl drops skiers and riders off the back of famous Gold Hill into the spectacular Bear Creek Basin, a breathtaking experience not to be missed.

The resort has opened nearly 400 acres of new terrain in the past year with the additions of Black Iron Bowl, Palmyra Peak, and Gold Hill Chutes. New restaurants, snowcats and snowmaking, increased flights for easy access, and new luxury hotels – lumière and Capella, continue to establish Telluride as one of the top few mountain resorts on the continent.

Telluride offers a comfortable mix of the authentic and luxurious, sophisticated and genuine, historic and spirited. World class hotels, restaurants and spas blend with turn-of-the-century Main Street, all connected to the slopes by the ease of our signature free gondola.

Come to Telluride this winter and discover what so many already have – that this destination is Unmatched in North America.



### ***Telluride***

The celebrated soul of this historic town remains spirited and uncompromised. Once bustling with miners in search of gold and silver, over a century later both locals and visitors are enchanted by its history, beauty and charm. Majestic peaks cradle this tiny town, just eight blocks wide, twelve blocks long and peppered with colorful historical homes and clapboard storefronts.

Guests catch a glimpse of Telluride's illustrious past while shopping in a refurbished Victorian home, dining in a renovated ice house or strolling by the site of Butch Cassidy's first bank heist. An exquisite collection of boutiques, galleries and restaurants give Telluride a modern sophistication blended with its historic past.

### ***Mountain Village***

Perched at 9,500 feet, Mountain Village is a European-style enclave with luxury hotels and condominiums, stylish boutiques and fine dining, including Allred's at the top of the gondola. Don't miss events, live music and après-ski at the new Hop Garden in the plaza. With ski runs meandering through, most hotels, homes and condominiums provide direct access to the slopes. Mountain Village offers a modern alpine elegance to complement the rustic charm of downtown Telluride.

### ***The Gondola***

Telluride's signature free gondola connects downtown, Mountain Village and the slopes — the most innovative transportation system found in North America. Providing environmentally friendly transportation, the gondola eliminates the need to drive once you've arrived. The gondola is free to foot passengers. Skiers who use the gondola to access the mountain need a lift pass to exit at the top, Station St. Sophia.



*“Rugged beauty and unabashed luxury intersect in this Colorado ski town.”*

*– Ski Magazine*



*“Unquestionably one of the most beautiful places to ski in the world.”*

*– Powder Magazine*

# REVELATION



## REV·E·LA·TION n.

1a: something revealed, especially a striking or astonishing disclosure of something not previously known or realized.



*The Telluride Ski Resort is thrilled to announce the opening of spectacular Revelation Bowl for the 2008-09 winter season.*

Located on a northeastern aspect that naturally gathers huge amounts of snow, Revelation Bowl has long been the envy of those standing atop Gold Hill. Served by a new, locally manufactured Leitner-Poma quad-lift and situated above tree line, the natural, wide-open bowl offers advanced and expert runs in an unbelievably scenic setting.

Choose ridgelines in either direction from the lift, with steeper pitches and rock features on the far sides of the powder bowl. The center touts an expanse of rolling, advanced terrain with groomed runs for cruising.

Descending into the bowl, the dramatic panorama spans from Bear Creek Basin up to 13,472 foot La Junta Peak, 13,555 foot Wasatch Mountain and 13,446 foot San Joaquin Ridge. To the skier's left the town of Telluride peeks out 3,000 feet below, overlooked by the San Sophia range. Revelation Bowl is truly unique, and will leave skiers and riders breathless from both the stunning scenery and the terrain.

# BOWL



### The Mountain

Skiers and riders are served by 18 lifts and enjoy over 2000 acres of diverse terrain, including the 2007 opening of Black Iron Bowl, Palmyra Peak and Gold Hill Chutes 6-10. With the 2008 opening of Revelation Bowl, Telluride has again set itself apart as one of the top ski destinations on the continent. The resort's vertical drop is now one of the largest in North America at 4,425 feet, with 3,845 vertical feet lift-served.



### Terrain

Traversing from north to south, the terrain naturally shifts from expert to beginner, keeping skiers and boarders in areas suitable to their skills. Exploration of the north face and east ridge of the mountain provide a challenge for experts including the legendary Plunge and Gold Hill. The middle of the mountain offers plenty of cruisers and corduroy for intermediates, and the southwest side offers gentle runs where beginners can test their legs while enjoying the endless scenery of the San Juans. The sense of freedom derived from Telluride's wide-open slopes and lack of crowds invigorates guests with a sense of awe and inspiration.

### Terrain Parks

Telluride's Hoot Brown Park keeps the most up-to-date hits and features. Located off See Forever, the riding scene features all the latest rainbows, fun boxes and tabletops. Riders new to the sport can begin their freestyle experience on the small jumps and rollers in the beginner park off the Ute Park Express (Lift 11). New this year, the intermediate park will be located under the Polar Queen Express (Lift 5), with true mid-size tables and features for those looking to work on their progression to the advanced park.



### Snowshoe and Nordic Tours

Visit the Topaten Nordic and Snowshoe area, located at the top of the Sunshine Express (Lift 10), for daily snowshoe tours. Ten kilometers of trails, groomed for classic and skate, wind through serene forests. Two- to three-hour tours are offered daily, and private group tours are available and highlight Telluride's wildlife, vegetation, geology and history. Snowshoes are provided, and no snowshoe experience is necessary.

In Mountain Village, another 6 km of trails run through the golf course for intermediate and advanced skiers. Backcountry snowshoeing and Nordic skiing is also available on the Valley Floor and up spectacular Bear Creek Basin. For information, please contact the Telluride ticket office at 970-728-7517.



### Ski School

The Telluride Ski & Snowboard School has a rich history of innovative teaching techniques, with certified professional instructors to lead the learning adventure. The American Teaching System is at the heart of the program, but the school embraces various teaching styles to provide the best experience for guests. Telluride's charismatic instructors from around the world collectively speak more than 10 languages. Students meet an instructor at the beginning of a lesson and say goodbye to a friend at the end of each day. For more information and reservations, check out [www.tellurideskiresort.com](http://www.tellurideskiresort.com) and click on Ski & Snowboard School.



### Children's Adventures

Children are divided into programs that offer age-specific learning experiences through Telluride's friendly mascots. Three year olds have fun with Morris the Bear, 4-6 year olds learn about Ute heritage, plants and animals with Olivia the Otter, while 7-12 year olds explore secret places on their mountain journeys with Eddie the Eagle.

### Daycare

The Daycare Center's unique design feature, the glass kiosk atop the nursery's central playroom, allows parents to check on their little ones without being seen. Care is available for children ages 2 months to 3 years. The Afternoon Kid's Club entertains kids after their lessons so parents can enjoy a full day on the mountain or around town. The program is complimentary for all children enrolled in the Ski & Snowboard School. For more information call 970-728-7531.

### Telluride Adaptive Sports Program

TASP is a non-profit organization dedicated to enriching the lives of people with disabilities by providing educational and recreational opportunities that encourage personal growth. Skiing opportunities are available for any person with a disability: 3-track, 4-track, mono-ski, sit-ski, bi-ski, dual-ski, blind, and adaptations on two skis and snowboard are offered. For more information call 970-728-7537.



*"The lure of skiing on some of the world's best terrain: breath-taking, snow-capped mountains and wide icing sugar-covered slopes as far as the eye can see."*

*- London Telegraph*



## ***Resort Dining***

### **On-Mountain Dining**

#### **Allred's Restaurant**

Culinary excellence, an award winning wine list, stunning views and impressive ambiance mesh to create the most unique dining experience in Telluride. Located at the top of the Gondola, Allred's Contemporary American cuisine is available nightly, with après ski from 3:30 p.m. For information and reservations, visit [www.AllredsRestaurant.com](http://www.AllredsRestaurant.com) or call 970-728-7474.



#### **NEW! Hop Garden**

Don't miss Mountain Village's newest slopeside bar & grill, offering breakfast, lunch and dinner including hot soups, hearty panini, specialty pastas, sizzling burgers and more. Ten specialty beers on tap and craft brews from around the world are featured daily – don't miss après ski with live music on the huge patio.



#### **Gorrono Ranch**

Located under the Village Express (Lift 4), this historic Basque sheep ranch serves up gourmet sandwiches, soups and salads indoors, with great burgers and BBQ fare out at the Smokehouse. Stop by the saloon for après and live music on the enormous deck with breathtaking views of the Wilson Range.

#### **NEW! Alpino Vino**

High upon the mountain, Alpino Vino, a European style hütte near the top of Gold Hill, offers renowned wines, gourmet sandwiches and soups, and antipasto plates. Opening its doors for the first time this winter, Alpino Vino's spectacular views coupled with comfortable cozy ambience provides a perfect retreat from the slopes.

#### **Giuseppe's**

At the top of the Plunge Lift (9), this local favorite offers sandwiches, soup, chili, snacks, beer, and wine. Stop by to catch your breath after laps on Kant-mak-em and soak in unbelievable views that stretch from Bear Creek Basin to the La Sal Mountains in Utah.

#### **Crazy Elk Pizza**

Located at the base of the Village Express (Lift 4) in Mountain Village, Crazy Elk offers the best pizza in town with hand rolled honey dough and zesty sauce, made from scratch daily. With an excellent variety of fresh salads and subs, Crazy Elk has something for the entire family.

#### **Big Billie's**

At the base of the Chondola and Sunshine Express (Lift 10), Big Billie's features All-American family food in a casual atmosphere, with a new sports bar to catch the game.

#### **High Camp Warming Hut**

At the top of the Prospect Express (Lift 12), High Camp serves hot drinks, sandwiches and snacks. Relax in the beach chairs and enjoy the breathtaking views of Palmyra Peak.

#### **Sleigh Ride Dinners**

Join us on Fridays and Saturdays for a western style buffet and night of entertainment for the whole family. Guests are met by a snowcat-drawn sleigh at the base of the Village Express (Lift 4) for a ride up to Gorrono Ranch under a starlit sky. For reservations please call 970-728-7474.



#### **Restaurants Downtown and in Mountain Village**

Food aficionados from all over the world are taking notice of chef innovation in Telluride. Some have gone as far as to compare the world-class dining to New York and Los Angeles. The destination boasts over 50 restaurants, bars and coffee houses ranging from Mexican taco stands and Oriental cuisine to French and Italian Bistros.

**For a full list of restaurants: [www.diningintelluride.com](http://www.diningintelluride.com)**





### *Activities*

Telluride boasts a myriad of activities for young and old, relaxed and adventurous. Town Park offers Tubing and Sledging on Firecracker Hill, and Ice Skating on indoor and outdoor rinks (skate rentals available). Dog Sledding is available for 1/2 day, full day and overnight trips. Several outfits offer Snowmobiling, including tours of the area mesas and the Alta Lakes ghost town. A free Ice Climbing wall in Mountain Village preps climbers for a trip over to the world-class ice park in Ouray. Other activities include Winter Flyfishing, Glider Rides and Horseback Riding.

### *Heliskiing*

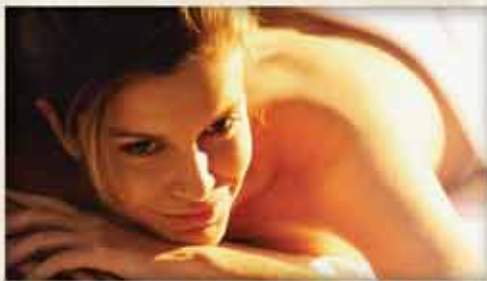
The only heliskiing operation in Colorado is an adventure seekers paradise. Since its inception, Helitrax guides have led thousands of enthusiastic riders down millions of vertical feet of untracked powder. The company's 25 years of success depends upon its high attention to safety and unsurpassed customer service. Their permit area covers more than 250 square miles in the spectacular San Juan Mountains.

### *Shopping*

From authentic western styles to the latest ski and snowboard gear, Telluride is a great place to experience unique and chic shopping. Both downtown and Mountain Village offer luxury boutiques, top-of-the-line sports shops, and eye-catching galleries.

### *Spa*

Luxurious spa treatments are plentiful in both Mountain Village and Telluride. Telluride's pampered guests indulge in everything from European facials and body polish treatments to acupuncture and reflexology. The Golden Door® Spa at The Peaks Resort in Mountain Village offers swim and workout facilities and a full complement of spa services.



*“Telluride is as close to perfect as it gets.  
It’s funky and elegant. It’s historic and contemporary.”*

*– New York Magazine*

## Accommodations

The destination has a variety of lodging and accommodation options – from the Victorian charm of Telluride’s small inns to the spacious grandeur of luxury condominiums in Mountain Village. All lodging is conveniently located within walking distance of the slopes, gondola, shopping and restaurants.

### Telluride Resort Lodging



Packages start at just \$97\* pp/pn. Offering a wide selection of lodging in Telluride and Mountain Village. Choose from comfortable condominiums to luxury homes – and experience the ease of booking your next vacation through Telluride Resort Lodging with the best Stay & Ski Packages in town.

\*Based on double occupancy and availability, some restrictions apply.

### lumière



Stay 4 nights, get the 5th night FREE\*. Telluride’s newest luxury boutique hotel offers 30 ski-in/ski-out residences (from studio to five bedroom penthouses). The ultimate in personalized service – guests enjoy ski/parking valet, European breakfast, hot tubs, fitness center, spa services, The Little Bar, and VIP concierge.

\*Blackout dates: 12/27/08-1/3/09 and 2/13/09-2/21/09. Valid for new reservations only. Based on availability. Restrictions apply.

### The Peaks Resort



Rates from \$199\*. Where the slopes end, the luxury begins. The Peaks Resort & Golden Door® Spa in Telluride offers beautiful accommodations in Mountain Village, ski-in/ski-out access to 115 adventurous trails, and indulgent spa treatments. Inquire about our luxurious See Forever Cabins and Penthouse Rentals.

\*Subject to availability. Rates are per room, per night and are not combinable with other offer or group rates. Tax and resort fee are additional.

### Kids Fly FREE to Telluride on American!\*



Kids have even more to smile about this winter! Purchase an adult ticket and receive a free child’s ticket on direct American flights from Chicago and Dallas! Offer is available in conjunction with Ski & Stay packages, making a family vacation to spectacular Telluride even more affordable than ever.

\*Offer is valid Jan 4, 2009 - Feb 13, 2009. Children ages 2-12 years fly free. Restrictions apply, based on availability.

### Hotel Columbia



After an extensive remodel, the Hotel Columbia is again ready to welcome guests back to slopeside luxury. With 21 beautifully redesigned rooms and suites, the Hotel Columbia can fulfill all of your vacation dreams. Boasting Telluride’s premier location – we are steps from the gondola and walking distance to all of the adventure Telluride has to offer including great dining and shopping.

### Mountain Lodge Telluride



Ask about our Upgrade Special\*. The best lodging value in Telluride. A blend of rustic elegance and western charm, The Mountain Lodge Telluride is your window to the splendor of the San Juan Mountains. Perched at 9,500 feet, the resort offers private luxury cabins, deluxe condominiums, and lodge rooms that provide a comfortable retreat from the ordinary.

\*Restrictions may apply.

### Platinum Properties



Experience the finest Telluride has to offer when you stay at this exclusive collection of luxury properties. Platinum Properties has taken high-end luxury service to the next level with our premiere 24-hour personal concierge services, including airport transfers, dining & activity reservations, pre-arrival grocery shopping and much more.

### Fairmont Heritage Plaza



Stay 5 nights, get the 6th night FREE\*. Ideally located in the heart of Mountain Village, the Lodge offers two and three bedroom residences at the height of luxury. Next door to skiing with slope side ski valet. Guests also enjoy complimentary transportation to/from the Telluride and Montrose airports. Enjoy our revitalizing Himmel Spa. Nightly Rates: \$450-\$2,200.

\*Offer based on package availability. Restrictions may apply.

### Telluride Sports



Up to 20% off of ski rentals. Featuring Telluride’s best selection of ski and snowboard gear, a state-of-the-art rental system, custom boot fitting, a professional tune center, and world-class customer service. Six convenient locations throughout Telluride and Mountain Village. Open daily from 8 a.m. – 6 p.m. (Main Street open from 8 a.m. – 8 p.m.). To book your rentals online, check out [www.rentskis.com](http://www.rentskis.com) ... Now that’s an easy rental.

### Telluride Resort Lodging

Telluride Ski & Golf is pleased to announce Telluride Resort Lodging, a full service vacation rental and property management company for all types and sizes of accommodations in Telluride. As part of Telluride Ski & Golf, Telluride Resort Lodging boasts the largest marketing reach in the region, an established reservations center, and the most competitive Stay & Ski packages for the destination. The successful Platinum Properties home rental program operates as the luxury sector of Telluride Resort Lodging. The company offers options from standard rental management to full caretaking services. For more information on Telluride Resort Lodging, please call 800-778-8581 for vacation rental information, and 970-728-7457 for owner inquiries.

### lumière - Telluride’s newest luxury boutique hotel

lumière Telluride, a luxury boutique hotel perched on the captivating slopes of Telluride’s Mountain Village, provides intimacy and comfort in a spectacular resort setting just steps away from the gondola and the Lower Boomerang ski run. The ski-in/ski-out accommodations range from studios to four bedroom residences and penthouses. lumière presents the finest in guest services with VIP concierge, stay attendant, spa treatments, valet, overnight ski tuning, European breakfast and much more. The Little Bar, the hip and happening slopeside scene, serves light fare options for lunch and dinner, and signature après cocktails to ward off the chill.

### Capella

Capella Hotels and Resorts have created a truly unique experience, steeped in luxury and personal choice. At Capella, a consummate staff will deliver unparalleled service. Capella Telluride will consist of 100 rooms and 48 residential units in a superb ski-in/ski-out location at the center of Telluride’s Town of Mountain Village. Amenities will include a world-class spa, pool, fitness center, ice skating rink, restaurants, entertainment and retail facilities.

*Projected opening - February 2009.*

**For Stay & Ski Packages:**  
**[www.TellurideSkiResort.com](http://www.TellurideSkiResort.com) | 800-778-8581**

**For information, please call 800-778-8581**

[www.TellurideSkiResort.com](http://www.TellurideSkiResort.com)



## Getting to Telluride is Easy – NEW Flights

### Increased Air Service

Guests visiting Telluride can conveniently fly direct into two area airports – Telluride (TEX) or Montrose (MTJ).

Telluride now boasts air access on **six major airlines from nine hub cities** around the nation, including new daily service on United from Chicago, and increased flights from Atlanta and Los Angeles.

- American from Dallas/Fort Worth and Chicago
- Continental from Houston and Newark
- United/United Express from Denver, Chicago and Los Angeles - **NEW**
- Great Lakes from Denver
- America West/US Airways from Phoenix
- Delta from Salt Lake City and Atlanta

Increased service provides a greater variety of carrier options, easier coast-to-coast connections, more flexibility in departure times and lower fares. Call 800-778-8581.



### Driving Distances

- Montrose - 65 miles (1.25 hours)
- Grand Junction - 130 miles (2.5 hours)
- Denver - 330 miles (6 hours)
- Albuquerque - 350 miles (5.5 hours)
- Phoenix - 485 miles (8 hours)



*Unmatched in North America*

**Telluride Ski & Golf Resort**  
565 Mountain Village Boulevard  
Telluride, Colorado 81435  
[www.TellurideSkiResort.com](http://www.TellurideSkiResort.com)  
800-778-8581